



## RODD COFFEE/TEA SET



*Rodd Coffee/tea set*

VINTAGE ITEM: A beautiful, graceful set of relatively recent date, consisting of a coffee and a tea pot, a jug & a sugar bowl with its lid.

The design is the that of 100 years ago, and just as good!

Tallest pot 25cm H (5)

model code:ANT MI Lot109:A24

Price: THB

To view a further example of Rodd's work, please click on the following link:

[RODD SILVER DINING CUTLERY](#)

*Historical note:*

**Maxwell George Rodd 13-12-1913 ☐ 11-3-2009**

G&E Rodd Pty Ltd was founded in Melbourne in 1919 and by the late 1930s was the leading firm of manufacturing jewellers in Australia. The founding brothers were George and Ernest, the latter being Maxwell's father.

During the 1930s, it diversified into silver tableware ☐ knives, forks and spoons, including souvenir spoons. ☐ During World War II, 200 employees were deployed to wartime production.



Young Rodd was diagnosed with tuberculosis when he was 21, so he went north to a dry climate. There, he worked as a bookkeeper on the pioneering Clare (sheep) Station, at Balranald in NSW.

After his parents died unexpectedly, he took over G&E Rodd in 1948 and it became a public company. Although only 30, Rodd's business ideas and skills saw Rodd Silverware flourish.

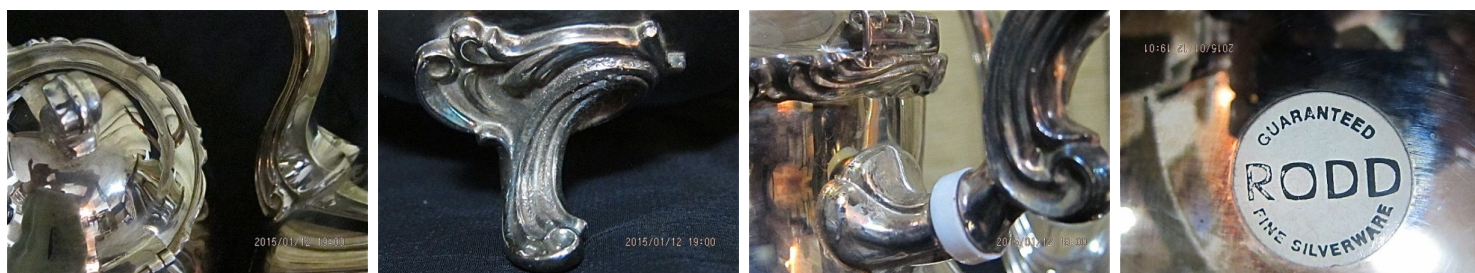
It became a household name, its products offered as prizes on Bob Dyer's popular radio and TV game program *Pick a Box*. In 1961, a set of Rodd Australian gold Jasmine spoons and forks was commissioned as Australia's wedding present to the Duke and Duchess of York.

In 1960 the company amalgamated with Myttons Ltd, and in 1967 Rodd became chairman and managing director.

He embraced corporate requirements, but this didn't make him a corporate man. He would walk through the Rodd factory in St Kilda each morning and greet each employee by name.

Even after he retired in the late '70s, he returned to attend reunions for employees.

Rodd Coffee/tea set



## PRODUCT DESCRIPTION

*Rodd Coffee/tea set*

VINTAGE ITEM: A beautiful, graceful set of relatively recent date, consisting of a coffee and a tea pot, a jug & a sugar bowl with its lid.

The design is the that of 100 years ago, and just as good!

Tallest pot 25cm H (5)

model code:ANT MI Lot109:A24

Price: THB

To view a further example of Rodd's work, please click on the following link: [RODD SILVER DINING CUTLERY](#)

*Historical note:*



## **Maxwell George Rodd 13-12-1913 – 11-3-2009**

G&E Rodd Pty Ltd was founded in Melbourne in 1919 and by the late 1930s was the leading firm of manufacturing jewellers in Australia. The founding brothers were George and Ernest, the latter being Maxwell's father.

During the 1930s, it diversified into silver tableware. – During World War II, 200 employees were deployed to wartime production.

Young Rodd was diagnosed with tuberculosis when he was 21, so he went north to a dry climate. There, he worked as a bookkeeper on the pioneering Clare (sheep) Station, at Balranald in NSW.

After his parents died unexpectedly, he took over G&E Rodd in 1948 and it became a public company. Although only 30, Rodd's business ideas and skills saw Rodd Silverware flourish.

It became a household name, with its products offered as prizes on Bob Dyer's popular radio and TV game program *Pick a Box*.

In 1961, a set of Rodd Australian gold Jasmine spoons and forks was commissioned as Australia's wedding present to the Duke and Duchess of York.

In 1960 the company amalgamated with Myttons Ltd, and in 1967 Rodd became chairman and managing director.

He embraced corporate requirements, but this didn't make him a corporate man. He would walk through the Rodd factory in St Kilda each morning and greet each employee by name.

Even after he retired in the late '70s, he returned to attend reunions for employees.

Rodd Coffee/tea set