



The Classic Chair Company
London

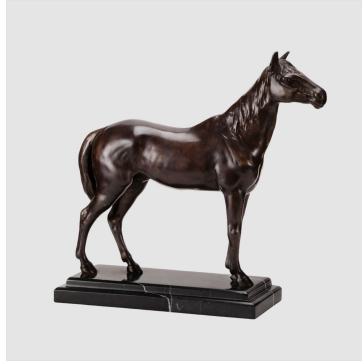
BRONZED HORSE FIGURE



Model : MI548-PAIR
Dimensions (cm) : w51 d12 h32
Materials :
Finished :



The Classic Chair Company
London



PRODUCT DESCRIPTION

Model : MI548-PAIR

Dimensions (cm) : w51 d12 h32

Materials :

Finished :