



The Classic Chair Company
London

BRONZED HORSE FIGURE



Model : MI548-L

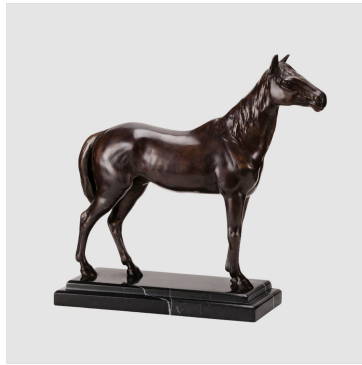
Dimensions (cm) : w36 d12 h32

Materials :

Finished :



The Classic Chair Company
London



PRODUCT DESCRIPTION

Model : MI548-L

Dimensions (cm) : w36 d12 h32

Materials :

Finished :