



The Classic Chair Company
London

ROBERT JUPE CHIFFONIER



Generally used as a sideboard and serving table, our models are made in two variations (Model RJC & Model RJLC), all made from solid rosewood, and have a turned and tapered lotus column. Model RJLC is arranged to store the extension leaves of the Robert Jupe Radially Extending Table when they are not being used. The leaves are inserted into baize lined slots through a door in the side of the chiffonier. The two cupboard doors at the front are fixed. The leaf cabinet is fitted with 4 secret drawers as well as wine storage and two large drawers for cutlery and napery.

Model : CB-RJLC

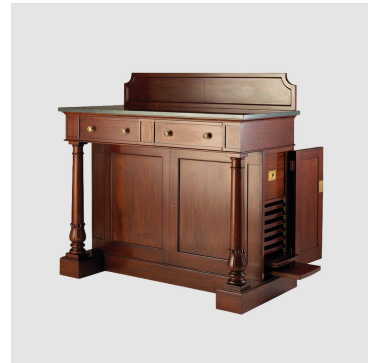
Dimensions (cm) : w118 d59 h111

Materials : Marble top

Finished : Hand Polish



The Classic Chair Company
London



PRODUCT DESCRIPTION

Generally used as a sideboard and serving table, our models are made in two variations (Model RJC & Model RJLC), all made from solid rosewood, and have a turned and tapered lotus column. Model RJLC is arranged to store the extension leaves of the Robert Jupe Radially Extending Table when they are not being used. The leaves are inserted into baize lined slots through a door in the side of the chiffonier. The two cupboard doors at the front are fixed. The leaf cabinet is fitted with 4 secret drawers as well as wine storage and two large drawers for cutlery and napery.

Model : CB-RJLC

Dimensions (cm) : w118 d59 h111

Materials : Rosewood

Finished : Wood Hand Polish