



The Classic Chair Company
London

GROSVENOR SHELL SPOONS



GROSVENOR shell spoons, boxed set.

VINTAGE ITEM: A set of 6 silver plated shell spoons with a double banding, the bowls of fluted and angled outline, stamped GROSVENOR DELPHIC EPNS A1

(This set matches the cake forks spoons ANT MI lot85:35E) click here to view: [GROSVENOR cake forks](#)

Teatime must have cutlery!

model code:ANT MI Lot86:35E

Price: THB

Historical note:

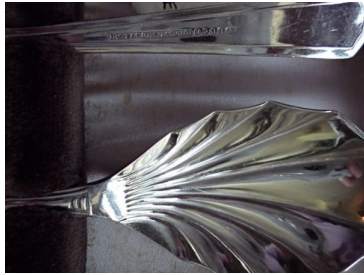
GROSVENOR

The Grosvenor Cutlery brand was established in 1928 and was, and still is, a major supplier to retail outlets throughout Australia.

“Christine”, “Delphic” etc are the names of the pattern.



The Classic Chair Company
London



PRODUCT DESCRIPTION

GROSVENOR shell spoons, boxed set.

VINTAGE ITEM: A set of 6 silver plated shell spoons with a double banding, the bowls of fluted and angled outline, stamped GROSVENOR DELPHIC EPNS A1

(This set matches the cake forks spoons ANT MI lot85:35E) click here to view: [GROSVENOR cake forks](#)

Teatime must have cutlery!

model code:ANT MI Lot86:35E

Price: THB

Historical note:

GROSVENOR

The Grosvenor Cutlery brand was established in 1928 and was, and still is, a major supplier to retail outlets throughout Australia.

“Christine”, “Delphic” etc are the names of the pattern.